



**DIESL**

Drive India Enterprise Solutions Limited  
A Subsidiary of TVS Supply Chain Solutions Limited

# Ultra Prime

## Total Boardroom Experience



**Say hello to the NextGen way of boardroom presentation & conferencing with the all-in-one Interactive Touch Panel.**

# Applications

Multi Use Single Screen

## Presentation Experience



**Information available at your fingertips with interactive touch technology**

Browse the internet, download, upload, save & share files, data, video, images and other content, all with a single touch

## Conference Experience



**Multi-user touch**

10 users can work together on any project.



**Annotation**

Annotate, Zoom in/out, rotate and move displayed images & videos



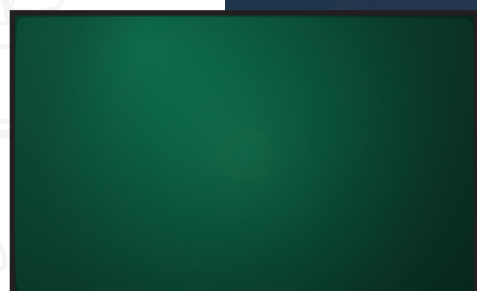
**Draw**

Multiple users can draw, erase and colour on the same screen

**You can choose the Interactive Touch Panel with:**



**Glass Board**



**Green Board**

# Features

## Presentation | Conference



**Comes With Inbuilt White Board Software**



**Wireless Data Transfer with Mobile/Laptop**



**10 Multi Touch writing Gesture Control**



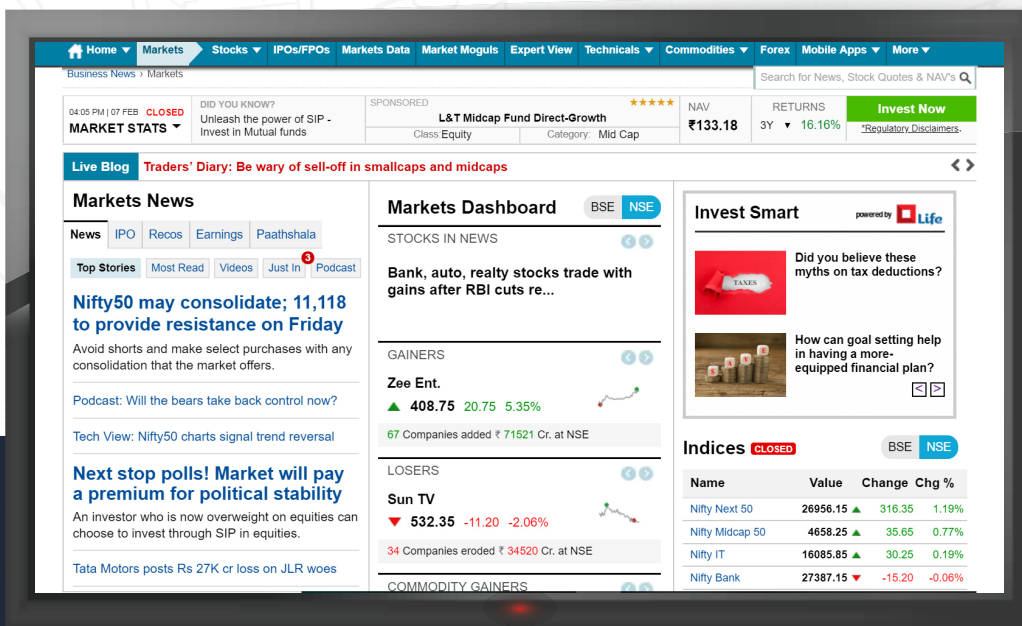
**Wide Viewing Angle 178 Degree**



**Comes with Android or / and Windows OS, both OS allow to download any contents and Apps online**



**Ultra HD Super Bright 4K Display**



## Product Experience



**Toughened Glass protection of Level 7 MOHS Standard**



**Hi-power Integrated 2 Channel 30w Digital Speaker**



**Inbuilt Wi-Fi Ethernet**



**Complete Metal Body With Ultra Thin Bezels**



**Multi Connectivity options like USB, VGA, HDMI, DP Port, Bluetooth**



**Inbuilt Single Board Computer (SBC)**



**Long lasting Display technology 50,000hr**

# Models & Specifications

	65 inch	75 inch
<b>Screen Type</b>	LED with super bright backlit display	LED with super bright backlit display
<b>Resolution</b>	3840 x 2160	3840 x 2160
<b>Number of Colours</b>	1.07B (10-bit)	1.07B (10-bit)
<b>Viewing Angle</b>	178/178°	178/178°
<b>Sensing Type</b>	Infrared 10 points writing	Infrared 10 points writing
<b>Touch Response Time</b>	<4ms (typ)	<4ms (typ)
<b>Response Area</b>	>5mm	>5mm
<b>Surface Protection</b>	Toughened glass Level 7 MOHS Std.	Toughened glass Level 7 MOHS Std.
<b>Processor</b>	Intel H110 Express 6th generation i5, upgradable	Intel H110 Express 6th generation i5, upgradable
<b>Networking</b>	10/100/1000M Adaptation	10/100/1000M Adaptation
<b>Memory</b>	4GB DDR4, Upgradable	4GB DDR4, Upgradable
<b>Hard Drive</b>	500GB SATA, Upgradable	500GB SATA, Upgradable
<b>Connectivity</b>	Bluetooth 4.0, Wi-Fi 2.4Ghz and 5.0 Ghz, Ethernet, USB, HDMI, DP, Audio	Bluetooth 4.0, Wi-Fi 2.4Ghz and 5.0 Ghz, Ethernet, USB, HDMI, DP, Audio
<b>Audio Power</b>	15W x 2	15W x 2
<b>Pre-loaded OS</b>	Android or /and Windows	Android or /and Windows
<b>Power Requirement</b>	100V-240V AC 50/60 HZ	100V-240V AC 50/60 HZ
<b>Power Consumption~</b>	<250W (typ)	<400W (typ)
<b>DIMENSIONS L*H*W~</b>	1514.8×934.7×102.6 (mm)	1736.2×1059.7×107.5 (mm)
<b>NET WEIGHT~</b>	50kg	60kg



## Drive India Enterprise Solutions Limited

A Subsidiary of TVS Logistics Service Ltd  
Kamla Executive Park, 7th floor, Near Kohinoor  
Continental Hotel, Off Andheri Kurla Road  
Andheri (East), Mumbai - 400 059.



[www.diesl.in](http://www.diesl.in)

## For Intelligent Interactive Touch Panel

### Sales enquiry



[iitp.sales@driveindia.co.in](mailto:iitp.sales@driveindia.co.in)  
022-67779151 / 67779079



### Service support

[iitp.support@driveindia.co.in](mailto:iitp.support@driveindia.co.in)  
022-67779002